



NOTICE OF RACE

1. Organizing Authority and Venue

- 1.1 The 2018 Finn World Masters will be held from 18th to 25th of May 2018 in Sant Andreu de Llavaneres (Barcelona) – Spain.
- 1.2 The Organizing Authority is Club Nàutic El Balís in conjunction with the International Finn Masters Committee (IFMC), the Spanish Finn Class Association and with the approval of RFEV (Spanish Sailing Federation - MNA).

2. Rules

- 2.1. The regatta will be governed by the rules as defined in the Racing Rules of Sailing (RRS) and the Finn World Masters Rules and Event Manual. These may be changed, where permitted, by the Sailing Instructions with the approval of the IFMC.
- 2.2. Appendix P "Special Procedures for Rule 42" will apply. In accordance with Class Rule A7.2 the recommended wind speed for Class Rule C1.1(2) is 12 knots.
- 2.3. The maximum recommended wind speed across the racing area is 20 knots and the minimum is 5 knots. The decision to start a race or abandon a race rests with the Race Committee.
- 2.4 World Sailing Addendum Q will apply to Medal Race. The version to be used will be available on the World Sailing website on the first day of the event unless included in the sailing instructions.
- 2.5 No national authority prescriptions will apply.
- 2.6 If there is a conflict between languages, the English text will take precedence.
- 2.7 Boats may be required to display advertising chosen and supplied by the Organizing Authority. Such advertising, if any, shall be displayed in accordance with the Sailing Instructions.





- 2.8 All competitors will be required to wear an adequate personal floatation device at all times while afloat, except briefly while changing or adjusting clothing or personal equipment.
- 2.9 Coach and support boat restrictions may be applied. These will be published in or with the Sailing Instructions.

3. Eligibility and Entry

- 3.1 Eligible competitors shall be current members of an IFA recognized National Finn Association. They shall complete on-site registration at the venue according to the **Event Schedule**, unless the Organizing Authority extends this date.
- 3.2. The regatta is open to Finn Class sailors born in 1978 or before.
- 3.3. Entries will be accepted in the following categories, with age determined as the age at the birthday in the year of the event:
- (a) World Master (the overall winner)
 - (b) Master (winner 40-49 years old)
 - (c) Grand Master (winner 50-59)
 - (d) Grand Grand Master (winner 60-69)
 - (e) Legend (winner 70+)
 - (f) Super Legend (80+)
 - (g) Ladies
 - (h) Classic Boat (Built prior to 1985)
- 3.4 Entries shall be submitted online at www.finnworldmasters.com prior to **1st April 2018**. Entries processed after this date will be accepted with an entry fee recharge according to NoR 3.5. **Entry deadline will be 1st May 2018**. Entries received after this deadline will only be accepted under force majeure and with the Organizing Committee authorization. **In any circumstance, entries received after 12:00hrs local time on 20th of May 2018 will not be accepted.**
- 3.5 The Entry Fee is 270€ and shall be paid by 1st April 2018. This includes a fee of €40 which the OA shall forward to the Finn Masters Account. Entries received after 1st April 2018 will be accepted with a 50% surcharge (405.-€). Entries received after 15 April 2018 will be accepted with a 100% surcharge (540.-€).





- 3.6 Entries may be reimbursed according to the following penalty options:
- Cancellation requested before 1st April: 200.-€ reimbursement
 - Cancellation requested from 1st April and before 15th April: 135.-€ reimbursement
 - Cancellation requested from 15th April 2018 will not be refunded.
- 3.7 Payment is required to complete the online entry process. An entry will not be completed until entry fees had been paid. The pre-entry list published at the event web site will not be updated until the payment had been confirmed.
- 3.8 Entries will officially be accepted once the registration has been completed with the Organizing Authority approval.
- 3.9 A valid measurement certificate for the boat entered shall be presented or its existence verified at on-site registration in accordance with RRS 78.2. Certificates can be sent by e-mail (fwm2018@cnelbalis.com) to the race office prior to measurement schedule.
- 3.10 Coach and support boats will be required to register and pay a fee of EUR 100.-€, prior 18th April 2018, and be insured and comply with local regulations, to be permitted to use launching and berthing at the venue. Registration may be completed on line through the event website. Registered boats will have the right to use the crane according to the harbor timetable, an assigned mooring, club facilities (changing room/showers), and 1 person regatta dinner ticket.

4. Competition Format

- 4.1 Eight (8) races are scheduled, comprising a fleet series and a Medal Race (MR) or Final Race (FR). The Race Committee in conjunction with the IFMC may decide to divide the fleet series into groups. The method of division will ensure groups of approximately equal size and ability, and will be detailed in the Sailing Instructions.
- 4.2 The ten boats ranked highest in the fleet series, plus boats tied with the same total score as 10th place, will be assigned to compete in the Medal Race, the remaining boats will be assigned to compete in the Final Race.
- 4.3 This format may be changed with the approval of the IFMC and will be specified in the Sailing Instructions.





5. Event Schedule

5.1 The event schedule may be changed with the approval of the IFMC and will be specified in the Sailing Instructions, however, the days allocated for racing will not be changed.

Date	Event	Time	Location/remarks
Friday, 18 th may	Measurement Registration	0900-1800 hrs. 0900-1800 hrs.	Inspection area Race Office
Saturday, 19 th May	Measurement Registration	0900-1800 hrs. 0900-1800 hrs.	Inspection area Race Office
Sunday, 20 th May	Measurement Registration Competitor's Meeting Practice Race Opening Ceremony	0900-1700 hrs. 0900-1700 hrs. 1200 hrs. 1400 hrs. 1900 hrs.	Inspection area Race Office (TBA) 1 race scheduled Event Village
Monday, 21 st May	Racing: First Warning Signal	1200 hrs.	2 races scheduled
Tuesday, 22 nd May	Racing: First Warning Signal	1200 hrs.	2 races scheduled
Wednesday, 23 rd May	Annual Masters Meeting Racing: First Warning Signal Official Dinner	1000 hrs. 1400 hrs. 2000 hrs.	Social Club (2 nd floor) 1 race scheduled Event village
Thursday, 24 th May	Racing: First Warning Signal	1200 hrs.	2 races scheduled
Friday, 25 th May	Racing: Final Race warning signal Racing: Medal Race warning signal Closing Ceremony & Prize giving	1200 hrs. After Final Race After races	Estimated 1330 hrs. Event Village

6. Schedule of Races and Attendance at Ceremonies

6.1 One or two races are scheduled for each day of racing, except for the final day when the Medal Race & Final Race are scheduled. A maximum of two races per day will be sailed, unless extended to three races with the approval of the IFMC, and then only in order to complete a valid championship.

6.2. Succeeding races will be started as soon as practicable after the finish of the previous races.

6.3. No warning signal will be made after 1600 hours on Friday, 25th May 2018.

6.5 All participants are requested by the International Finn Class and the Organizing Authority to attend the Opening and Closing Ceremonies.





7. Equipment Inspection

- 7.1 All boats shall undergo measurement of hulls, spars and sails as well as equipment checks according to the Finn Class World Masters Rules unless otherwise decided by the event Equipment Inspection Committee. Inspections will take place according to **Event Schedule**. All measured equipment will be identified for the Championship. Only identified equipment may be used during the Championship.
- 7.2. A maximum of 2 masts, and 2 sails shall be used during the Championship. Only certified sails shall be presented. There will be no provision for uncertified sails to be measured at the event.
- 7.3. Measurement and equipment checks may be made throughout the Regatta at the discretion of the Class Representative, Race Committee or the International Jury.

8. Sailing Instructions

- 8.1 The Sailing Instructions (SI) will be available at event web site prior to registration dates.

To avoid wasting paper and collaborate with the environment, CNEB will appreciate if SI could be read from electronic supports and before to come at the venue.

Copies of Sailing Instructions will be available at the Race Office during the registration, but only if they are requested.

9. Racing Area

- 9.1 The intended race-course area will be in front of El Balís harbour (see Attachment "A")

10. Courses

- 10.1 Courses will be either windward/leeward or trapezoid with a target time of 75 minutes and a time limit of 120 minutes.





11. Scoring

- 11.1. (a) Four races shall be completed to constitute a valid Championship.
- (b) When fewer than 5 races have been completed, a boat's series score will be the total of her race scores.
- (c) When 5 or more races have been completed, a boat's series score will be the total of her race scores excluding her worst score.
- 11.2. Five races shall be completed in the fleet series before a medal race or final race are scheduled.
- 11.3. The Low Point scoring system will be amended in the SI to account for medal races.
- 11.4. Scoring may be changed to fit with changes to NoR 4 and 5 permitted by the IFMC.
- 11.5. The positions of competitors in the Categories (NoR 3.3) will be based on their total score in the overall standing.

12. International Jury

- 12.1 An International Jury will be appointed in accordance with RRS Appendix N and perform the duties listed in RRS N2.
- 12.2 Decisions of the Jury will be final as provided in RRS 70.5

13. Prizes

- 13.1. Perpetual prizes will be awarded to the overall winner and the winner of each Category.
- 13.2. Prizes will be awarded for the top 10 overall and the top 3 in each Category.
- 13.3. Legends will receive a participation prize from the Masters President.





14. Insurance

- 14.1 Each participating boat shall be insured with valid third-party liability insurance with a minimum cover of €1,500,000 or the equivalent thereof in any other currency for any one incident. By entering the event each competitor declares that they hold such insurance.
- 14.2 Individual insurances with third part liability may be obtained at the Race office during registration under the Catalan (county) Sailing Federation agreement. This insurance is only valid for this event. (2017 fee = 20.-€; 2018 fee forecast = 5% increase approx. 2018 fee available from 1st Jan.)

15 Support Boats and Personnel

- 15.1 All support boats (boats with support persons on board as defined by the RRS) shall be registered (see 3.8) with the Organizing Authority and will be required to comply with local legislation, event support boat regulations and Sailing Instructions. The Organizing Authority may refuse registrations and accept later registrations at their sole discretion.
- 15.2 All support boats shall clearly display the 3 letter national code of their World Sailing Member National Authority in contrasting color to the background at all times while afloat. The minimum height for the letters shall be 200 mm and visible from both sides of the boat.
- 15.3 Registered support boats shall act as rescue boats in case of need according to the procedures that will be described at Sailing Instructions.
- 15.4 All support boat shall be equipped by a VHF marine radio operative at the official radio channel that will be published at the Sailing Instructions, the appropriate safety individual buoyancy (lifejackets), and fitted with operative kill cords, which shall be used at all times when afloat. Radio communications procedures will be described in the SI.





16. Media Consent: Rights to use Names & Likenesses

- 16.1 Competitors automatically grant the Organizing Authority, the International Finn Association and any party to which they may delegate this right, without payment the right in perpetuity to make, use and show (including via the internet), any motion pictures, still pictures, live, taped or filmed television, or any other form of media, of or relating to the event.
- 16.2 Boats may be required to carry cameras, sound equipment and positioning equipment as specified by the Organizing Authority.
- 16.3 The top three competitors as well as the individual race winners may be required to attend a media press conference each day.
- 16.4 Competitors may be required for interviews at the regatta.

17. Risk Statement

17.1 Rule 4 of the RRS states: “The responsibility for a boat’s decision to participate in a race or to continue to race is hers alone.” Sailing is by its nature an unpredictable sport and therefore inherently involves an element of risk. By taking part in the event, each competitor agrees and acknowledges that:

- (a) They are aware of the inherent element of risk involved in the sport and accept responsibility for the exposure of themselves, their crew and their boat to such inherent risk whilst taking part in the event;
- (b) They are responsible for the safety of themselves, their crew, their boat and their other property whether afloat or ashore;
- (c) They accept responsibility for any injury, damage or loss to the extent caused by their own actions or omissions;
- (d) Their boat is in good order, equipped to sail in the event and they are fit to participate;





- (e) The provision of a race management team, patrol boats and other officials and volunteers by the race organiser does not relieve them of their own responsibilities;
- (f) The provision of patrol boat cover is limited to such assistance, particularly in extreme weather conditions, as can be practically provided in the circumstances;
- (g) The fact that the Race Committee conducts inspections, or not, of a boat does not reduce the responsibilities of each competitor set out in this Notice of Race.

18. Club Nàutic el Balís Information & contact details

Address: Crta. (road) NII - Km. 651.5
08392 - Sant Andreu de Llavaneres (Barcelona) - SPAIN

Phone: +34-937929900

Opening hours: Monday to Friday – 9 to 14 & 16 to 18 hrs.
Weekend and holidays – 10 to 14 hrs.

Mail: fwm2018@cnelbalis.com

Club web site: www.cnelbalis.com

Event web site: www.finnworldmasters.com

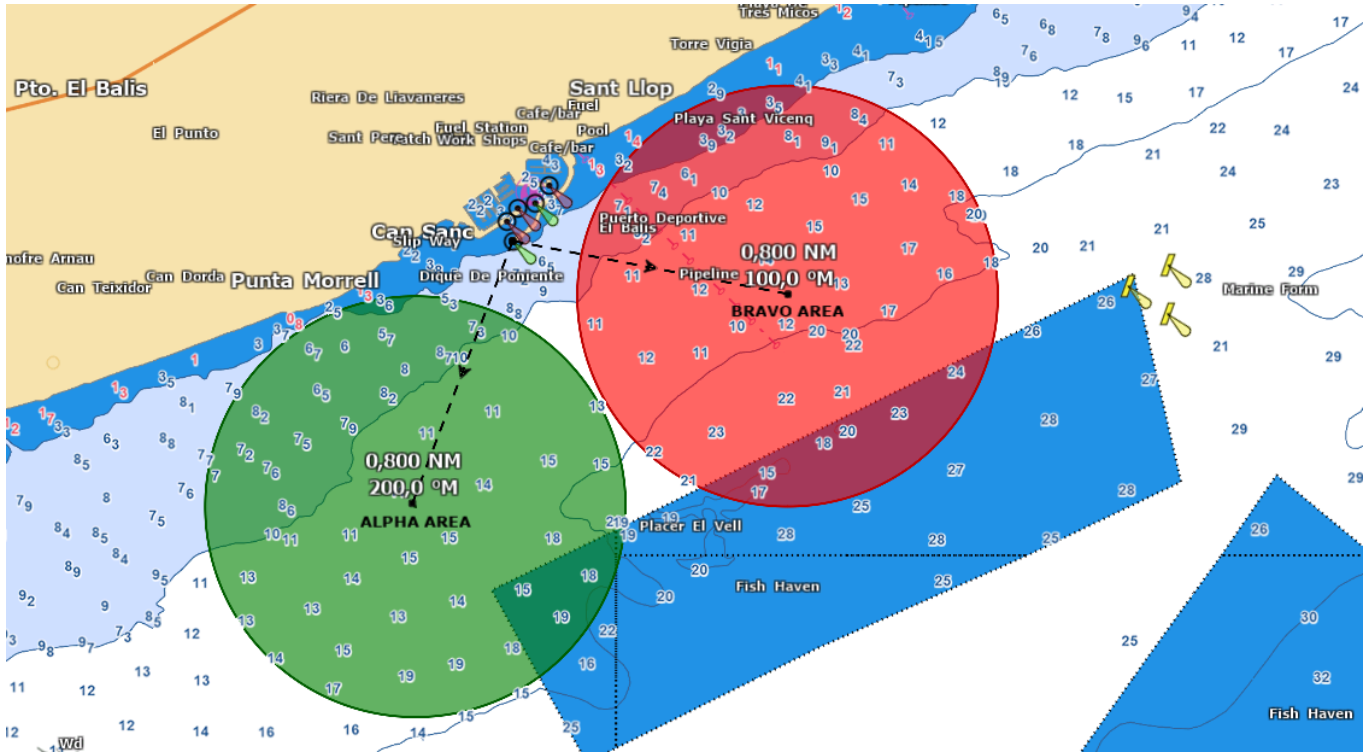
Local OA web site: <http://fwm2018.cnelbalis.com>

Accommodation and logistics: check "General Information" file available at web site.



ATTACHMENT "A"

Racing Area



Club facilities and access

